

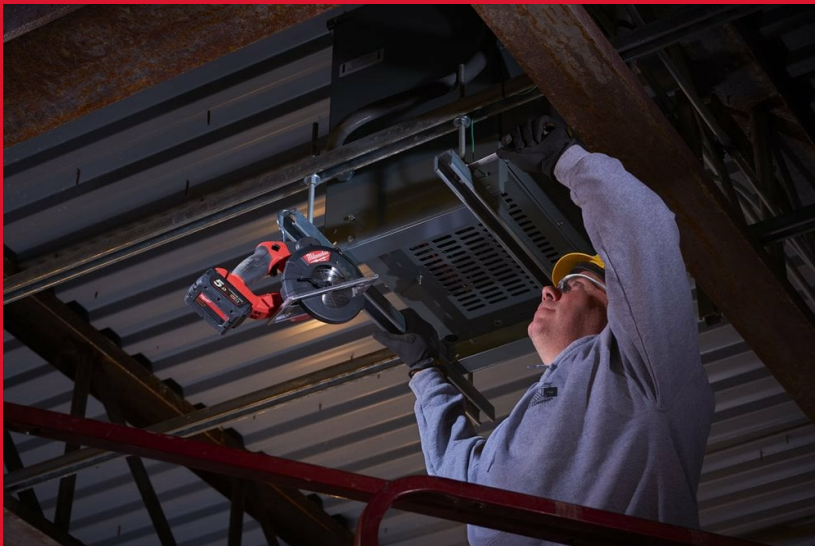
M18 FMCS-502X

M18 FUEL™ 57 MM METAL CIRCULAR SAW

- Dry-cutting technology provides cold, fast and burr-free metal cutting
- Tool-free depth adjustment, quickly and easily adjusts cutting depth from 0 to 57 mm
- Compact and light weight design for most comfortable use
- Dual-action trigger prevents any accidental start up
- Tool-free cutting depth adjustment and plunge lever for fast and effective plunge cuts
- Compact and light weight design for most comfortable use
- On board allen key storage for easy access and preventing losing the key
- Supplied with 150 mm 34 teeth metal cutting blade
- The DNA of our FUEL™ platform redefines the balance of cordless technologies. MILWAUKEE®'s POWERSTATE™ brushless motor, REDLITHIUM™ battery pack and REDLINK PLUS™ electronic intelligence delivering outstanding power, run time and durability
- Flexible battery system: works with all MILWAUKEE® M18™ batteries



REDLITHIUM™



No load speed (rpm)	3900
Blade diameter (mm)	150
Bore size (mm)	20
Cutting depth (mm)	57
Weight with battery pack (EPTA) (kg)	2.8 (M18 B5)
Kit included	2 x M18 B5 Battery packs, M12-18 FC Charger, HD Box
Article Number	4933459194