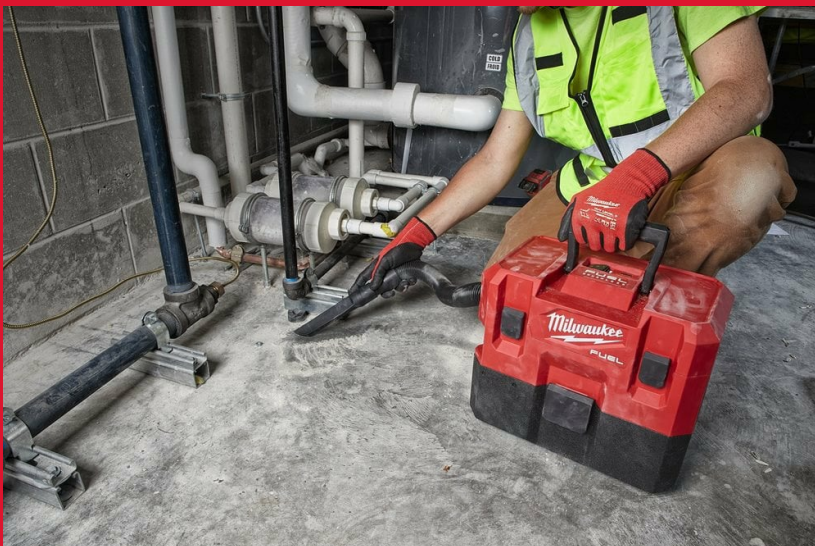


# M12 FVCL-O

## M12 FUEL™ WET/ DRY VACUUM

- Powerful M12 FUEL™ motor with a maximum air flow of 1275 l/min & 105 mbar provides 18V performance for both wet and dry clean up applications
- With a 6.0 Ah battery the vacuum provides 14 minutes of run time on high and 26 minutes on the low setting, this compact vacuum is ideal for spot and service focused wet/ dry quick clean up needs
- The highly efficient HEPA filter collects 99.97 % of airborne particles down to 0.3 microns
- Internal accessory and hose storage allows all attachments to be carried with the tool avoiding loss of equipment
- The DEK 26 power tool connector allows for efficient dust extraction from power tools
- Stackable tool box design for added portability and easier storage
- Wall mount hanging plate included for increased storage options
- On board blower for moving debris away from the work area
- REDLINK PLUS™ intelligence system delivers an advanced digital overload protection for tool and battery and uniquely enhances the tool performance under load
- Flexible battery system: works with all MILWAUKEE® M12™ batteries



### REDLITHIUM™

Capacity solids (l)	5.7
Capacity liquids (l)	6.1
Max. vacuum (mbar)	105
Air volume (l/min)	1275
Weight with battery pack (EPTA) (kg)	5.0 (M12 B6)
Kit included	No batteries supplied, No charger supplied, No kitbox or bag supplied
Article Number	4933478186